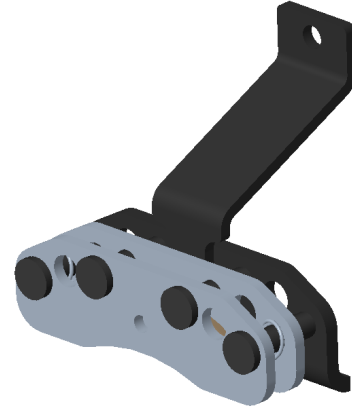


BISON PARK BRAKE



FEATURES

- Capable of 2,500 lbf. of clamp force
- Max input force of 200 lbf.
- Competitively priced
- Zinc plated components with 96hr salt spray protection standard
- Capable of CW and CCW actuation
- Floating mount

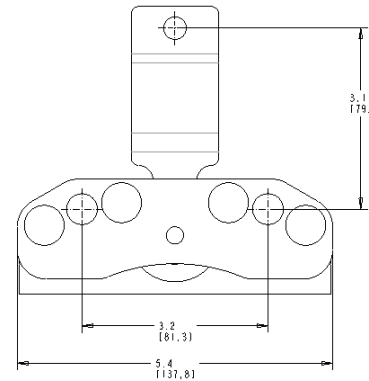


SPECIFICATIONS

Weight	2.4lb
Rotor Diameter	5"- 8.5"
Rotor Thickness	.125"- .260"
Lining Type	Non-Asbestos Organic
Lever Offset	0"- 2.9"

Specifications are guidelines only and subject to change. Consult Hayes Performance Systems for specific model, part number, and assembly drawings -contact@hbpsi.com.

REFERENCE DIMENSIONS



TORQUE INFORMATION

